

Lyndhurst

mandolintab.net

Musical notation for the first system, including a treble clef, key signature of two sharps (F# and C#), and a 6/8 time signature. The melody begins with a repeat sign and a fermata over the first note. The mandolin tablature below shows the fret numbers for each string.

Mandolin

2 2 2 4 0 2 4 0 2 0 4 0 0 0 0 4 0 5 4 5 2 0 4

Musical notation for the second system, continuing the melody. The mandolin tablature below shows the fret numbers for each string.

Mandolin

2 2 2 4 0 2 4 0 2 0 4 0 4 0 2 0 4 2 2

Musical notation for the third system, continuing the melody. The mandolin tablature below shows the fret numbers for each string.

Mandolin

4 0 2 5 2 0 5 2 4 5 2 0 4 0 0 0 0 4 0 5 4 5 2 0 4

Musical notation for the fourth system, including a first ending bracket labeled '1'. The mandolin tablature below shows the fret numbers for each string.

Mandolin

2 5 2 0 5 2 4 5 2 0 4 0 4 0 2 0 4 2 2

Musical notation for the fifth system, including a second ending bracket labeled '2'. The mandolin tablature below shows the fret numbers for each string.

Mandolin

2 2 2 4 0 2 4 0 2 0 4 0 4 0 2 0 4 2 2

Musical notation for the sixth system, continuing the melody. The mandolin tablature below shows the fret numbers for each string.

Mandolin

2 2 4 0 4 2 2 2 0 5 2 0 4 0 0 0 0 4 0 5 4 5 2 0 4

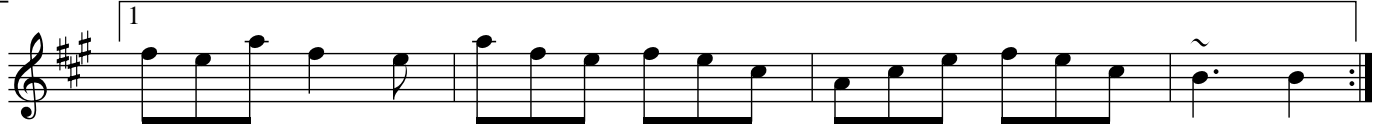
Musical notation for the seventh system, continuing the melody. The mandolin tablature below shows the fret numbers for each string.

Mandolin

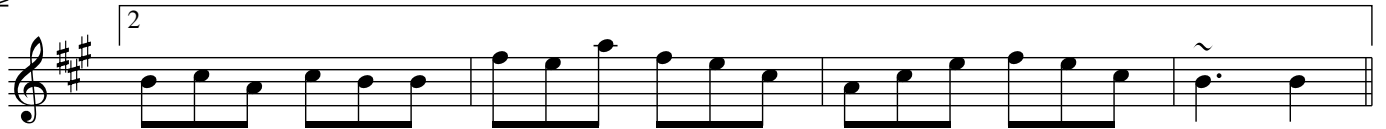
2 4 0 4 2 2 2 0 5 2 0 4 0 4 0 2 0 4 2 2



Mandolin
4 0 2 0 5 2 0 5 2 0 2 0 4 0 0 0 0 4 0 5 4 5 2 0 4



Mandolin
2 0 5 2 0 5 2 0 2 0 4 0 4 0 2 0 4 2 2



Mandolin
2 4 0 4 2 2 2 0 5 2 0 4 0 4 0 2 0 4 2 2